



**KÖSE  
PROJECT**

**©2023**



## KÖSE PROJECT ENGINEERING



### OUR VISION

We always wanted to create a better world in any way we can and we impose our way of feelings to our projects. Solutions that serves to our clients and also to our one only world is our main aim with good engineering practices.



### OUR MISSION

We believe businesses can grow with a conscience, and succeed with a soul — and that they can do it with inbound. That's why we've created an ecosystem uniting engineering and eco-friendly solutions to help businesses grow better every day.



### CONTACT

**info@koseproject.com**  
**+90 - 534 543 56 73**

## ABOUT US

We realized that we can support our customers with our eco-friendly solutions with like all-in-one solutions with flexibility which we believe a great benefit for customers. To satisfy customer needs with this philosophy, we have established our company.

## WHY CHOOSE US?

If you are tired of very restricted boundaries because of your suppliers and you also need eco-friendly solutions, then Köse Project is the right address for you.



### Service Hub

We always provide after sales services to find solutions to problems of our customers



### Sales Hub

Our sales team is with full of expertised team with the answers to your needs



### Operation Hub

Our operations team lets you have good confidence with our solutions.

@ info@koseproject.com

www.koseproject.com



Istanbul, TURKIYE

# OUR SOLUTIONS

## 01 ENGINEERING



- 01 Steel Design
- 02 Mechanical Design
- 03 Civil Design
- 04 General Layouts

## 02 SUPPLY



- 01 Steel Manufacturing and Supply
- 02 Equipment Supply
- 03 General Export Solutions

## 03 CONSULTANCY



- 01 Project Management
- 02 Site Supervision
- 03 Equipment Supervision
- 04 Plant Inspection



# ENGINEERING

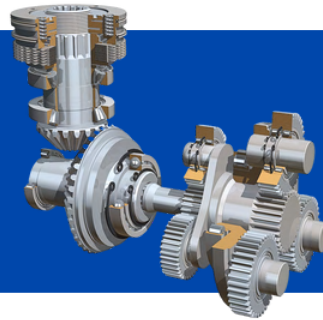
## Steel Design

We are able to make steel designs with our partners according to your needs for both technological and building steel structures. Tailor made solutions are our main aim to satisfy customer needs.



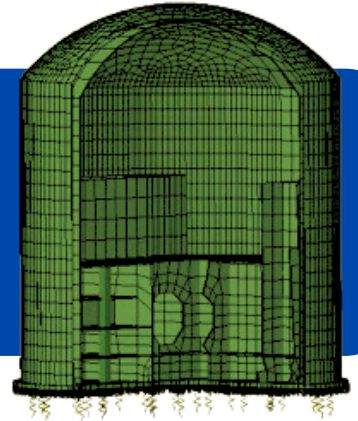
## Mechanical Design

Experienced design team are ready for tailor made designs of equipments. We nearly design everything in 3D to have more control over details.



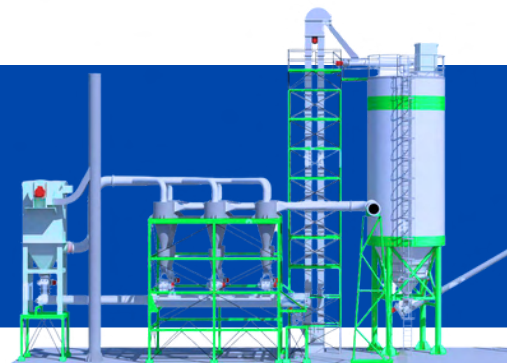
## Civil Design

We are able to make civil designs with our partners according to your needs for buildings, foundations, walls etc. Tailor made solutions are our main aim to satisfy customer needs.



## General Layout

Our design team is able make very detailed arrangement drawings for plant implementations/modernizations. Our aim to design in 3D to review plants in more details to prevent mistakes.



# SUPPLY - STEEL MAN.& SUPPLY

## Steel Manufacturing and Supply

We have partners all around the world but especially in Turkey, we are able to provide challenging prices without compromising quality. Our quality engineers always follows the productions together with quality teams of our partners. If it is requested by a customer, we are also able to arrange third party controller to our partners workshops.





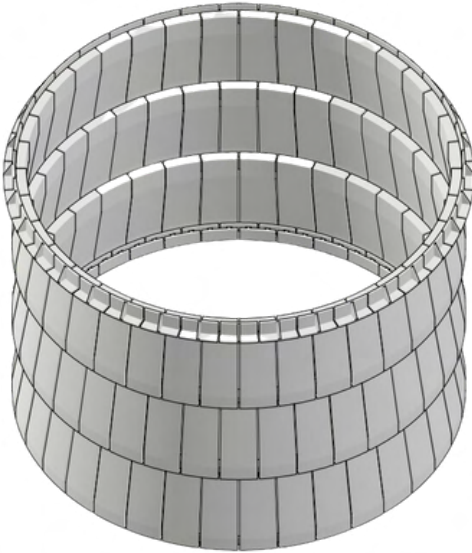
# SUPPLY - STEEL MAN. & SUPPLY



# SUPPLY - EQUIPMENT SUPPLY

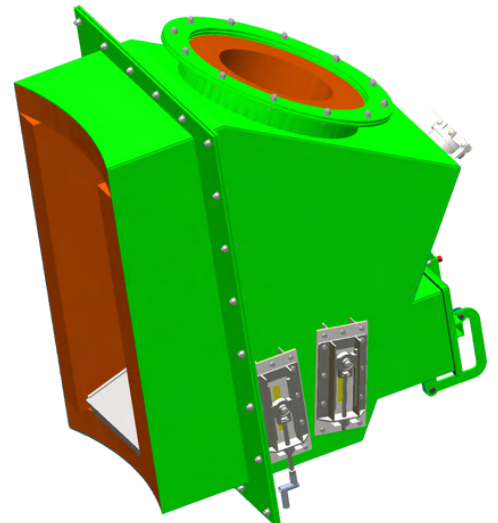
## Equipment Supply

With a good team of engineers and designers, we are able to provide package solutions to our customers. As our guarantee has been given to whole system that we provide, customers are on comfort zone with our solutions. Not limited to followed ones we can provide solutions with TAD Dampers, Rotary Valves, Shut-off valves, Conveyor Equipments, Silos, Filters, Fans, Splash Boxes, Kiln bedding casted plates, Dib Tubes etc.

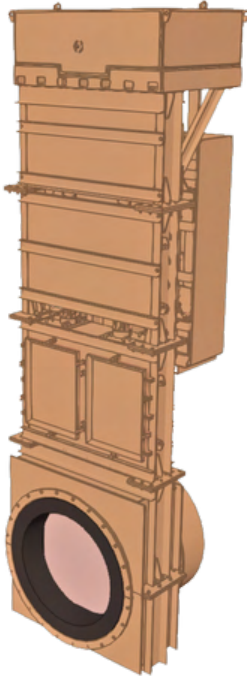


DIB TUBES are designed by ourselves are long lasting and process-wise good solution

Splash boxes are designed by ourselves are adjustable to make better flow of material with preferred angles.

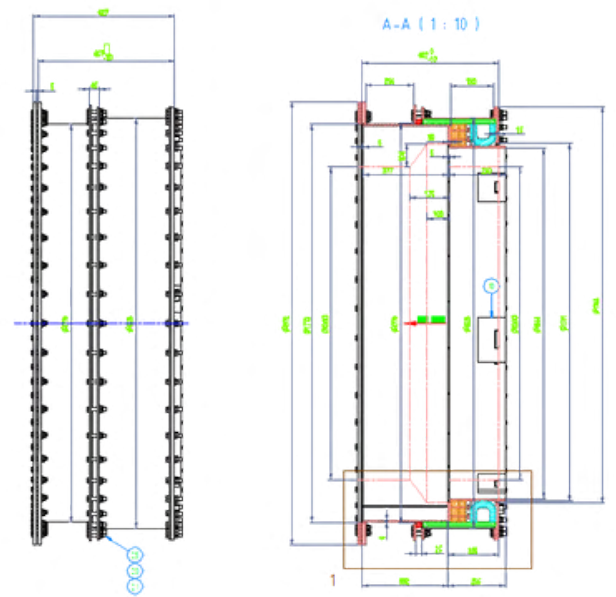


# SUPPLY - EQUIPMENT SUPPLY



TAD Dampers with adjustable height

Expansion Joints



Filters (Process, bypass, dedusting etc.)

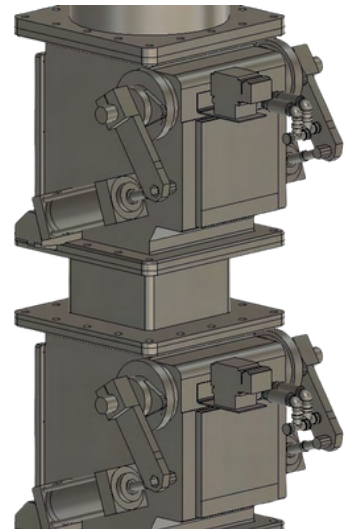


# SUPPLY - EQUIPMENT SUPPLY

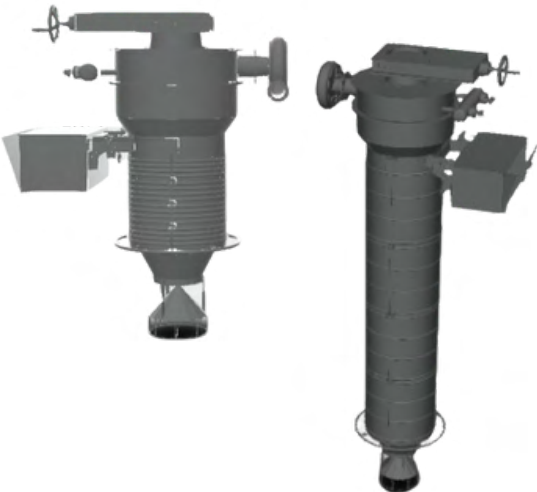


Screw conveyors

Motorized flap valves



Loading spouts



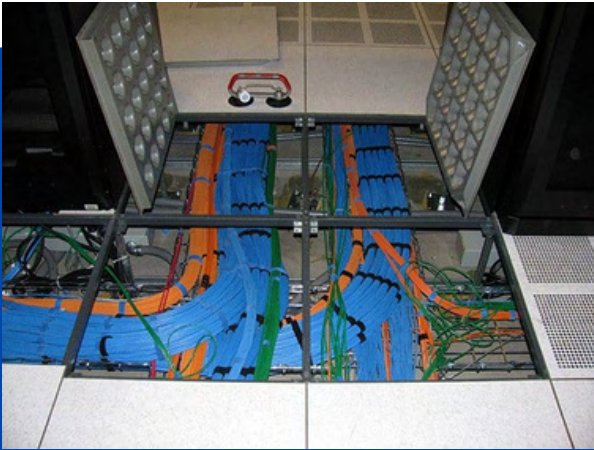
# SUPPLY - GENERAL EXPORT

## Trade and Transport Services

If you need a material that you cannot find your original market or maybe it is expensive. This is where we step in to support your procurement activity. Without any hesitation, you can ask us if we are able to find and supply this specific material, equipment etc. to you.

In Turkey, this kind of materials are not expensive when you compare the price with certain regions and it is well-known that Turkey provides this service without decreasing the grade of the materials, equipments etc.

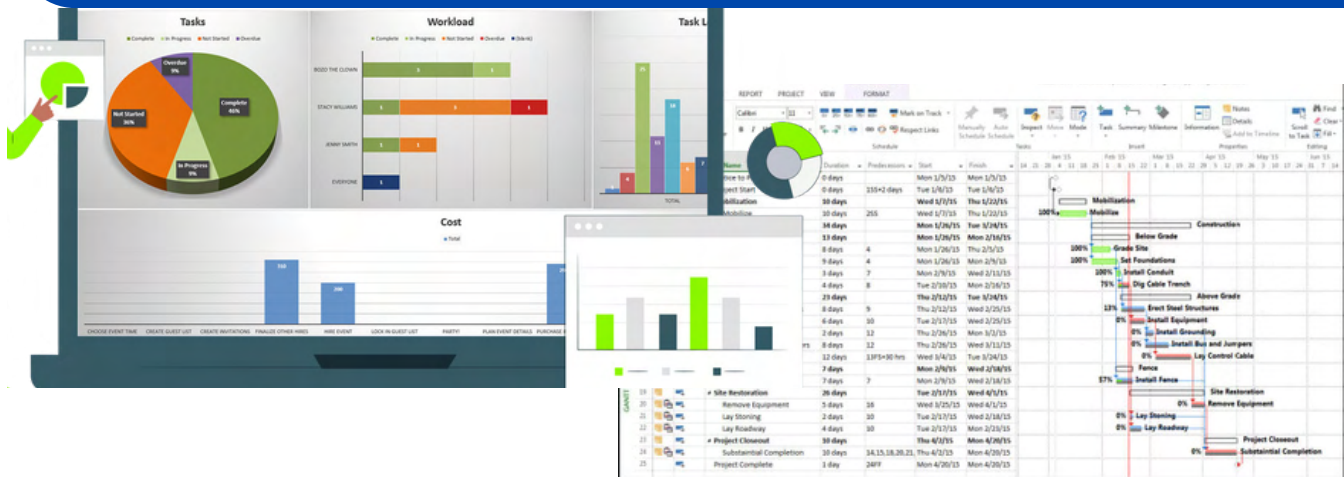
As we have very good connections in the Turkish market, you can benefit from this service and we will be glad to help.



# CONSULTANCY

## Project Management

All around the world we have experience of industrial projects as project management. We are well aware that finishing a project in time, budget and as contracted is very challenging. Because of that, we put lots of efforts to the projects and investigate deeply risks with several methods and according to that we inform our customers for upcoming events as well.



Our aim to finish a project as:

- Budgeted
- As agreed time line
- According to contract

We always manage:

- Negative risks
- Positive risks
- Stakeholders
- Updates on regulations
- For sure contract



KPIs are the nearly most important data type to understand performance of a project during initiation phase.



# CONSULTANCY

## Supervision

During erection periods of equipments, steel structures, civil works, lifting activities, we can provide site supervision service nearly to all around world. First, we provide to customer the CV's of related people and then it is up to customer to approve the person or not.



## Plant Inspection

We visit your plants if it is required by you or project itself by nature and to necessary measurements. Then we can implement this measurements to existing drawings, datas or even we can correct old as-built drawings as they are usually pushed to the back of other topics even they have crucial importance for future actions.